

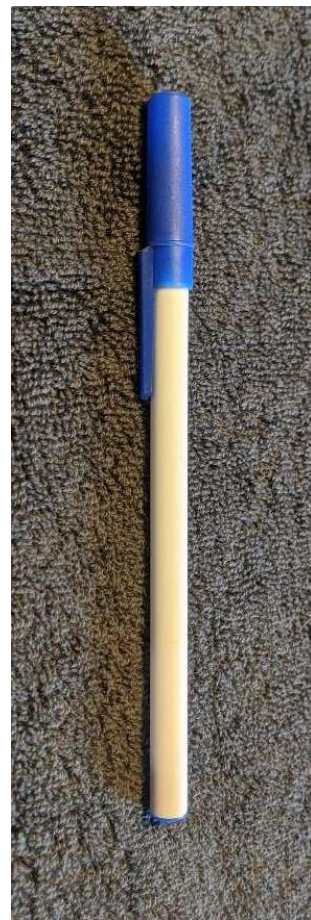
How to Make a Whistle Using Common Household Items, K-12

Jemez Historic Site

Parental Supervision suggested

Supplies needed

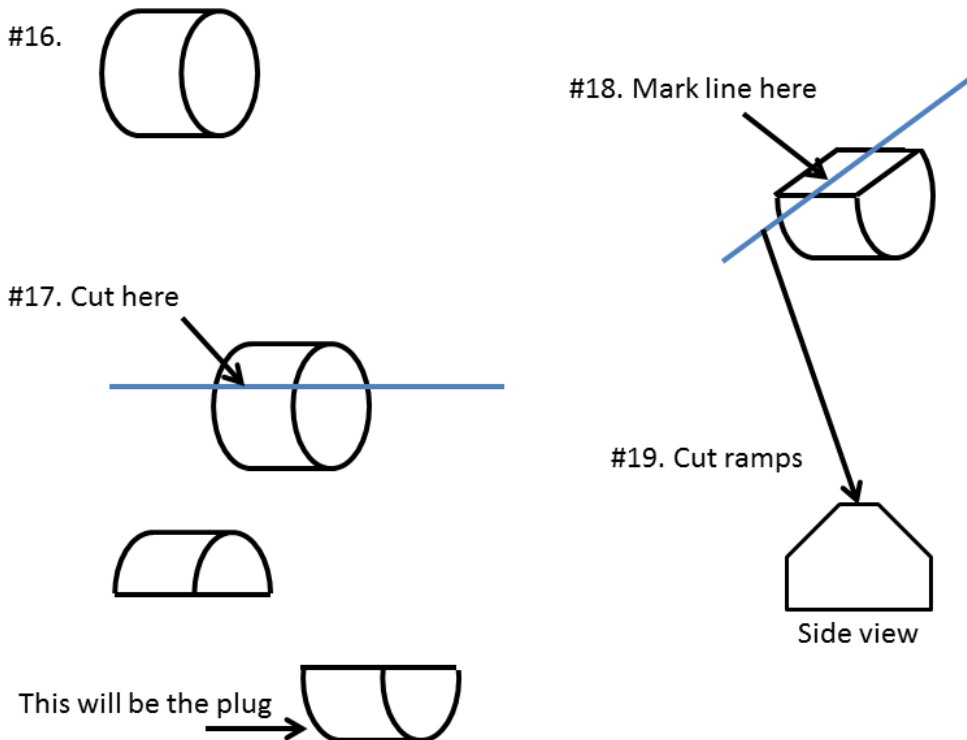
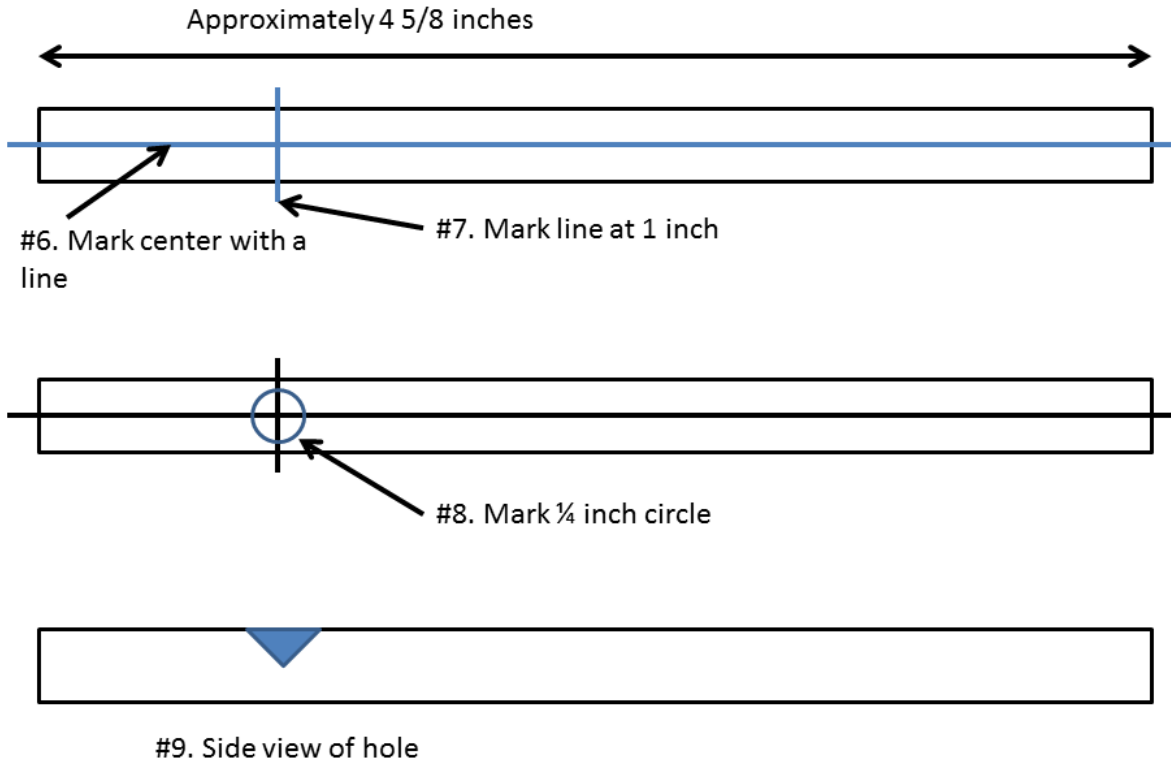
1. Pen, simple type ball point pen
2. Pencil
3. Knife, utility knife or hobby knife
4. Paperclip (straightened)
5. Eraser, from a pencil or from click eraser
6. Small dowel, skewer
7. Measuring tape or ruler
8. Superglue

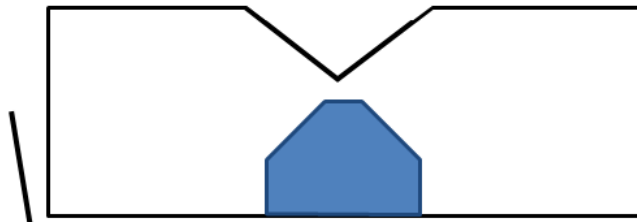


Steps (Use with video) (*Shown in diagram)

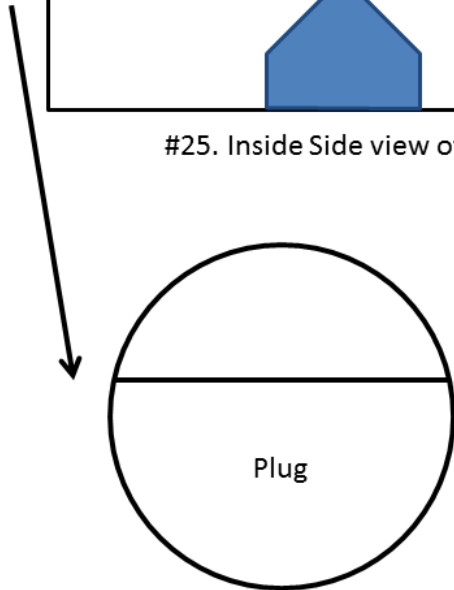
1. Find pen
2. Take lid off pen
3. Use knife to pry of insert on bottom of pen
4. Use knife to pry off writing end of pen
5. The tube for the whistle
6. Mark with pencil the center of the tube*
7. Measure 1 inch from one end of tube and mark across the center line*
8. Draw a $\frac{1}{4}$ inch circle around the previous mark*
9. Using a sharp knife, carefully cut out the circle in a v-shaped cross section*
10. -12. Cut until opening is $\frac{1}{4}$ inches
13. -14. Use eraser from pencil or clip eraser
15. Mark eraser $\frac{1}{4}$ inches from the end
16. Use knife to cut at the mark, this is the plug for the inside of the whistle*
17. Cut the plug just above the half, it will be d-shaped*
18. Draw a line down the top center of the plug*
19. -20. This step is to cut the ramps that will be need for the whistle to work properly. At a 45 degree angle cut the ramps on both sides of the center mark.*
21. -22. Squeeze the plug into one end of the tube, making sure that the line is perpendicular to the tube. The ramps pointing to the top where the hole is.
23. -24. Use the small dowel or straightened paperclip to slowly push the plug onto the tube. Push it until it is in the center of the top hole.
25. Adjust the plug using the dowel or paperclip. The whistle should be working at this point if it matches the diagram and looks like the pictures on the video. Adjustments can be made using a knife or hobby knife. *
26. Add superglue to the area where the eraser touches the tube. This will prevent to eraser from moving around.
27. Use the paperclip to move around the glue
28. Your whistle is done. If you want to make it into a flute, add some holes to the bottom of the whistle as shown in the diagram. *

Diagrams





#25. Inside Side view of plug



View of Inside from opening

#28. Make in to a flute
Add hole to the bottom
of the flute

