



K-4 Columbian Exchange Matching Game

Look at the items below and try to match them to where they originally came from. During the Columbian Exchange items were shipped across the Atlantic Ocean between the New World and the Old World.

New World



Old World



tomatoes



grapes



cassava

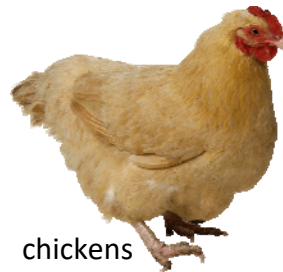


tobacco

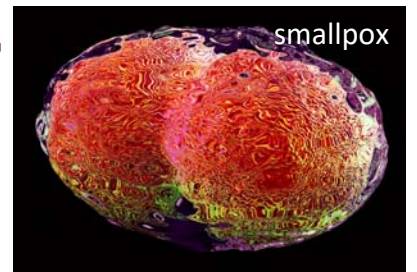
bananas



coffee beans



chickens



smallpox



chocolate



cows



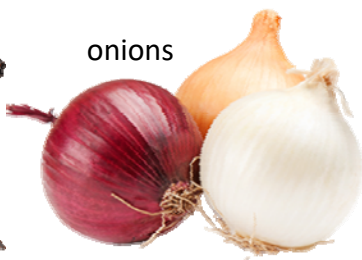
vanilla



pigs



horses



onions



potatoes



corn